

---

**Tissue-Tek® Paraform®**  
Sectionable Cassette System

**Revolutionizing efficiency,  
productivity and tissue  
safety in histology**



continuous innovation for pathology



# Smart cassette innovation offering the highest level of tissue safety with unsurpassed efficiency and productivity

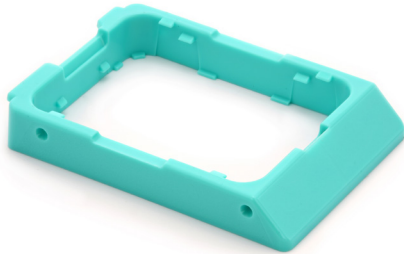
The Tissue-Tek® Paraform® Sectionable Cassette System makes tissue preparation easier, faster and safer than ever before. The unique cassette material and design preserves specimen orientation from grossing through to microtomy, eliminating the need to perform manual steps at embedding.

Tissue is easily placed in its correct orientation at grossing thanks to specialized cassette features, and once the lid is closed, there is no need to open the cassette again to reorient tissue – ever. This significant improvement over standard cassettes eliminates opportunities for tissue

loss, incorrect orientation and cross-contamination that are familiar yet dangerous occurrences during the manual embedding process.

Although compatible with all existing laboratory methods and manual embedding processes, the Tissue-Tek Paraform Sectionable Cassette system combined with the Tissue-Tek AutoTEC® a120 Automated Embedding System provides total automation of the embedding process for high quality, predictable results that offer significant time savings and allows resources to be allocated to other labor intensive areas in the laboratory like microtomy.





Tissue-Tek® Paraform® Frame

## Tissue-Tek® Paraform® Frame and LP Frame

The process begins with the Tissue-Tek Paraform Frame. Paraform Frames share similar dimensions to the most commonly used cassettes and are available in 12 different colors. Paraform Frames are also compatible with several common printers including the Tissue-Tek® SmartWrite® Cassette Printer.

The Tissue-Tek Paraform LP Frames are also available in four different colors.



Tissue-Tek® Paraform® Cassette

## Tissue-Tek® Paraform® Cassette

Tissue-Tek Paraform Cassettes come in 6 unique configurations that are quickly and easily snapped into the Paraform Frame. The time-consuming and complicated process of orienting tissues at manual embedding is simplified to just placing tissue into the Paraform Cassette's specially designed features at grossing. Once the lid is closed and the tissue is secured in place, there is no need to ever open the cassette again, eliminating opportunities for tissue loss, incorrect orientation and cross-contamination.



Tissue-Tek® Paraform® Cassette Tamper

## Compatible with manual embedding process

The Tissue-Tek Paraform Sectionable Cassette system is compatible with existing laboratory embedding methods using any manual embedding console. A variety of Tissue-Tek® Paraform® Base Molds and the Tissue-Tek® Paraform® Cassette Tamper prevent the need to ever open a cassette again, and because tissue orientation is preserved from grossing, the manual embedding process is faster and more efficient.

The Tissue-Tek Paraform Sectionable Cassette system combined with the Tissue-Tek AutoTEC® a120 Automated Embedding System provides total automation of the embedding process for high quality, predictable results that offer significant time savings and allows resources to be allocated to other labor intensive areas in the laboratory like microtomy.



Tissue-Tek® Paraform® Base Mold



## Tissue-Tek® Paraform® Standard Cassette



- Basket-style cassette that is ideal for larger tissues that need to be flat without any specific orientation
- Maximum space for larger tissues while still ensuring tissues fit in the base mold as they should to facilitate microtomy
- 6-sided reagent pass-through for effective tissue processing of large tissue samples
- Tissue examples: uterus, colon, liver, prostate, breast, appendix, large skin excisions

## Tissue-Tek® Paraform® Biopsy Cassette



- Basket-style cassette with smaller mesh pattern for smaller tissues that need to be flat without any specific orientation
- Plenty of space for multiple small tissue fragments
- 6-sided reagent pass-through for effective tissue processing
- Tissue examples: hemorrhoid tissue, prostate chips, umbilical cord and membrane, medium-size skin excisions

## Tissue-Tek® Paraform® Biopsy Cassette, 13mm x 13mm



- Centralized cassette with small mesh pattern for smaller tissues that require orientation
- A sponge-filled lid helps hold tissues in the proper orientation from grossing through to microtomy
- All around reagent pass-through for effective tissue processing while keeping small biopsies secure
- Tissue examples: cervical biopsy, vas deferens, GI biopsy, skin punch biopsy

## Tissue-Tek® Paraform® Orientation Cassette



- Basket-style cassette with small mesh and orientation posts for larger tissues that require some orientation
- Orientation posts and featured lid help keep larger tissues flat while also standing on edge for proper orientation
- 6-sided reagent pass-through for effective tissue processing
- Tissue examples: gall bladder, cyst wall, fallopian tube, medium-size skin excisions

## Tissue-Tek® Paraform® Shaved Biopsy Cassette



- Channel-style cassette with small mesh for smaller tissues and shave biopsies that require orientation on edge
- Channels come in 2 widths and have features to hold tissues up on edge from grossing to microtomy
- All around reagent pass-through for effective tissue processing
- Tissue examples: GI biopsies, cyst wall, skin shave biopsies, skin punch biopsies

## Tissue-Tek® Paraform® Core Biopsy Cassette



- Channel-style cassette with small mesh for tissue core biopsies
- Channels keep cores separated while lid features keep cores flat and on the same plane in the cassette
- All around reagent pass-through for effective tissue processing
- Tissue examples: Liver core biopsy, prostate core biopsy, kidney core biopsy, breast needle core biopsy





## Tissue-Tek® Paraform® Tissue Orientation Gels

The Tissue-Tek® Paraform® Tissue Orientation Gels are semi-solid hydrogels intended to be inserted into a Tissue-Tek Paraform Biopsy Cassette. These innovative Gels are optional and help to further extend the range of tissues that can be accommodated by the Tissue-Tek Paraform Sectionable Cassette System.

- Flexible hydrogel allows secure customization of tissue orientation at grossing
- Penetrable, aqueous gel matrix allows reagents to penetrate and infiltrate the tissue
- Compatible with common histologic stains, including H&E, Iron, Trichrome, and Silver stains
- Compatible with IHC and ISH
- Comes in 5 different Gel styles including Biopsy, 2-Lane, and 1, 2, and 3-mm Punch Gel



Biopsy Gel



2-Lane Gel



1-mm Punch Gel



2-mm Punch Gel



3-mm Punch Gel

# Accessories and consumables

Product code	Product name and quantity
7090	Tissue-Tek AutoTEC® a120 Automated Embedding System
7015	Tissue-Tek® Paraform® Cassette Tamper
7019	Tissue-Tek® Paraform® Biopsy Cassette, 13 mm x 13 mm; 500 cassettes/box
7020	Tissue-Tek® Paraform® Biopsy Cassette; 500 cassettes/box
7021	Tissue-Tek® Paraform® Standard Cassette; 500 cassettes/box
7022	Tissue-Tek® Paraform® Orientation Cassette; 500 cassettes/box
7023	Tissue-Tek® Paraform® Shaved Biopsy Cassette; 500 cassettes/box
7024	Tissue-Tek® Paraform® Core Biopsy Cassette; 500 cassettes/box
7030	Tissue-Tek® Paraform® Cassette Frames Aqua; 500 cassette frames/box
7031	Tissue-Tek® Paraform® Cassette Frames Blue; 500 cassette frames/box
7032	Tissue-Tek® Paraform® Cassette Frames Gray; 500 cassette frames/box
7033	Tissue-Tek® Paraform® Cassette Frames Gold; 500 cassette frames/box
7034	Tissue-Tek® Paraform® Cassette Frames Green; 500 cassette frames/box
7035	Tissue-Tek® Paraform® Cassette Frames Lilac; 500 cassette frames/box
7036	Tissue-Tek® Paraform® Cassette Frames Orange; 500 cassette frames/box
7037	Tissue-Tek® Paraform® Cassette Frames Pink; 500 cassette frames/box
7038	Tissue-Tek® Paraform® Cassette Frames Red; 500 cassette frames/box
7039	Tissue-Tek® Paraform® Cassette Frames Tan; 500 cassette frames/box
7040	Tissue-Tek® Paraform® Cassette Frames White; 500 cassette frames/box
7041	Tissue-Tek® Paraform® Cassette Frames Yellow; 500 cassette frames/box
7045	Tissue-Tek® Paraform® Biopsy Gels; 50 gels/pouch, 10 pouches/case
7046	Tissue-Tek® Paraform® 2-Lane Gels; 50 gels/pouch, 10 pouches/case
7047	Tissue-Tek® Paraform® 1-mm Punch Gels; 50 gels/pouch, 10 pouches/case
7048	Tissue-Tek® Paraform® 2-mm Punch Gels; 50 gels/pouch, 10 pouches/case
7049	Tissue-Tek® Paraform® 3-mm Punch Gels; 50 gels/pouch, 10 pouches/case
7052	Tissue-Tek® Paraform® Processing/Embedding Medium, Formula 3; 8 bags, each 1 kg/case
7055	Tissue-Tek® Paraform® Standard Base Mold, 32 mm x 28 mm; 12 base molds/pack
7056	Tissue-Tek® Paraform® Biopsy/Orientation Base Mold, 30 mm x 19 mm; 12 base molds/pack
7057	Tissue-Tek® Paraform® Biopsy Base Mold, 13 mm x 13 mm; 12 base molds/pack
7058	Tissue-Tek® Paraform® LP Stacked Frames Orange; 400 stacked frames/box
7064	Tissue-Tek® Paraform® LP Stacked Frames White; 400 stacked frames/box
7065	Tissue-Tek® Paraform® LP Stacked Frames Yellow; 400 stacked frames/box
7067	Tissue-Tek® Paraform® LP Stacked Frames Pink; 400 stacked frames/box



## A long tradition of excellence

**Known for best-in-class automation and reliability Sakura Finetek remains a privately-held company in business since 1871. Sakura Finetek has achieved its success and solidified its reputation by providing timely, ingenious solutions to the real challenges laboratories face on a day-to-day basis.**

Our rich history has given us a thorough understanding of technology, quality, reliability, value for money and our customers' requirements. We use this knowledge to passionately develop products that anticipate developments in both technology and market needs.

Sakura Finetek USA, Inc. (SFA) is based in Torrance, California. Functions covered at this facility include sales and marketing, service and technical support, R&D, and manufacturing. SFA is an ISO 13485 certified manufacturer and supplier. As one of the two global manufacturing and R&D sites, SFA develops instruments and reagents into system solutions and secures our innovation with a steady stream of patents.

In addition to supporting the U.S. marketplace, SFA is also responsible for Canada, Mexico, Central and South America and serves these markets with

a network of local distributors.

With the worldwide headquarters in Japan and regional offices in Japan, The Netherlands and the U.S.A., the global strategy of worldwide representation has been fulfilled to guarantee our customers the best service and support.

Our organization is developing, professionalizing and growing continuously, and thus maintaining its position as a trustworthy and valuable partner in histopathology.

Please visit our website [www.sakuraus.com](http://www.sakuraus.com)

Sakura Finetek USA, Inc., 1750 West 214th Street  
Torrance, CA 90501 U.S.A.

